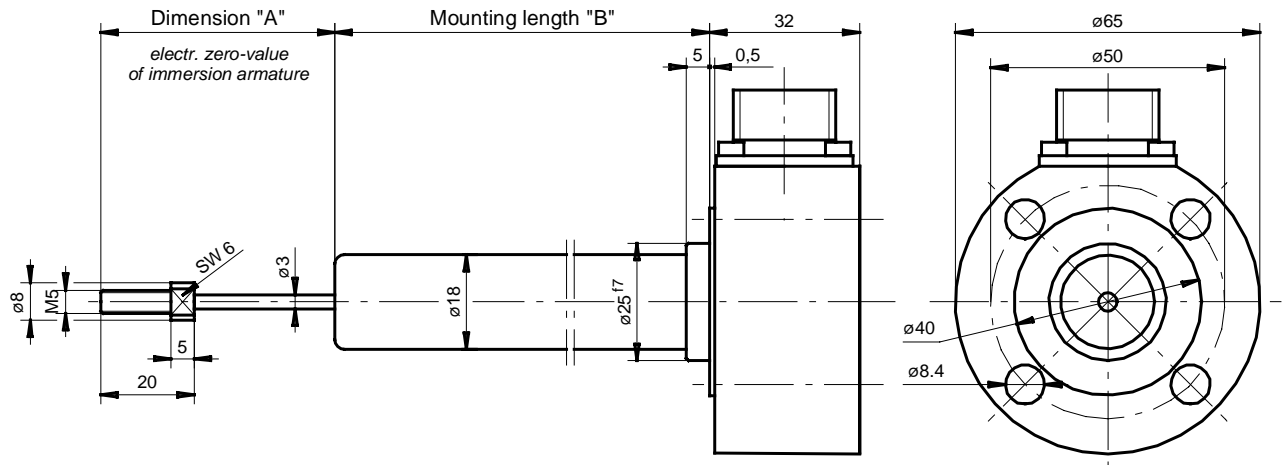


Inductive Bulb Transducer

for cylinder mounting in hydraulics and pneumatics

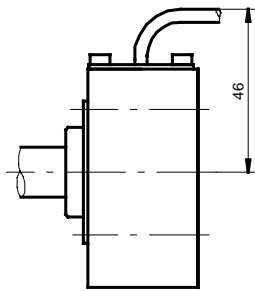
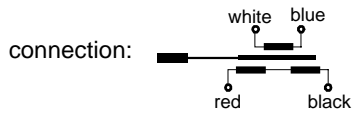
special design **DPA ... H** (pressure proof up to 300 bar)

MESSOTRON



radial wire interface

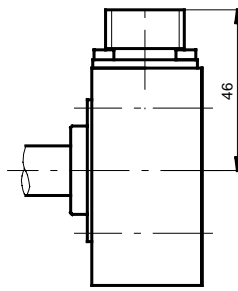
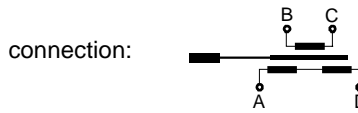
teflon wire 2.5 m long



Example: DPA 100 HQ 0,25%

radial connector interface

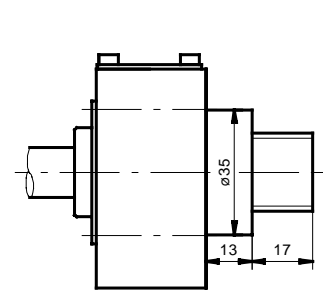
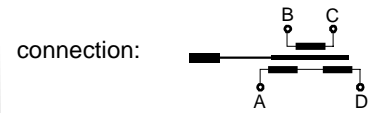
mating connector provided



Example: DPA 100 HR 0,25%

axial connector interface

mating connector provided



Example: DPA 100 HAX 0,25%

		DPA 25	DPA 50	DPA 75	DPA 100	DPA150	DPA 200	DPA 250	DPA 300
Measurement stroke	mm	±12,5	±25	±32,5	±50	±75	±100	±125	±150
Max. mechanical stroke	mm	30	55	80	110	160	220	280	340
Dimension A	mm	40	50	65	80	110	140	170	200
Mounting length B	mm	70	140	185	260	380	500	620	740
Transducer weight	g	950	1050	1100	1200	1400	1550	1700	1900
Plunger weight	g	14	16	18	23	28	30	35	40
Supply voltage (eff.)		up to 5 V							
Excitation frequency *)		5 kHz option: 10 kHz							
Static resolution		continuous							
Recommended amplifier		MBI 46.31							
Linearity error *)		±0.5% of nominal range options: ±0.25%; ±0.1%							
Temperature error of zero-point		±0.1% / 10K							
Temperature error of sensitivity		±0.15% / 10K							
Pressure resistance		operating pressure 300 bar; test pressure 350 bar							
Operating temperature		-40°C ... +80°C, option: up to 120°C							
Protective system (DIN 40050)		IP 65							

*) select option when ordering

MESSOTRON

Hennig GmbH & Co. KG
Industrie-Messtechnik

Friedr.-Ebert-Str. 37, Tel.: (06257)82331
D-64342 Seeheim-Jugenheim

DPA ... H Series
25 ... 300 mm

Drawing
28.23.11

Date 05/96

Design of transducers can be customised

subject to change without prior notice