

Inductive Displacement Transducer

Integrated electronics

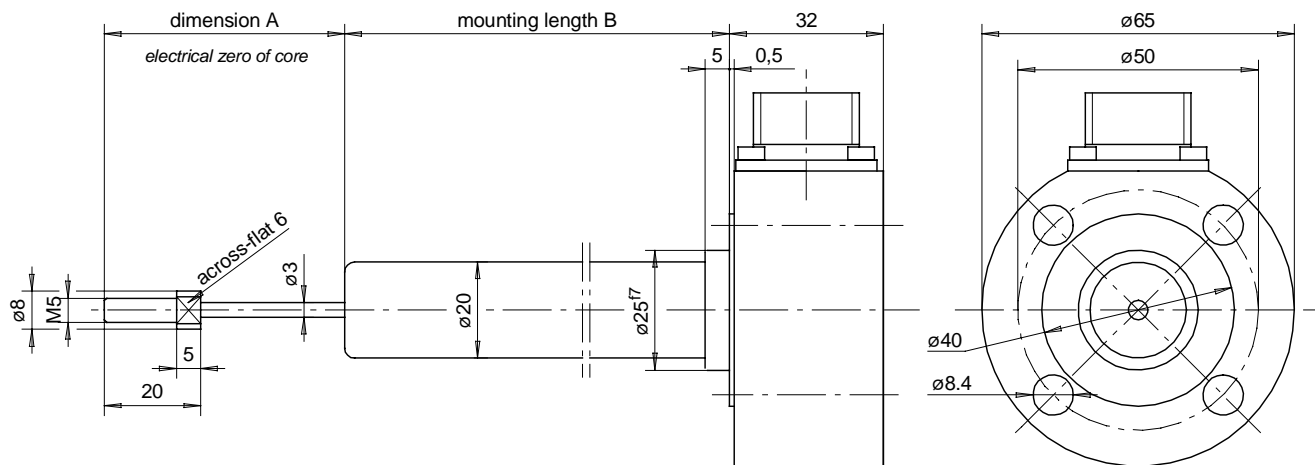
Supply $\pm 15V$

Output $\pm 10V$

Pressure resistant up to 320 bar

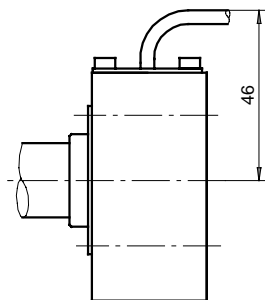
DOE

MESSOTRON



radial wire interface

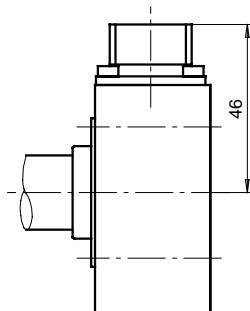
teflon wirel 2.5 m long



Example: DOE 300 Q 0,5%

radial connector interface

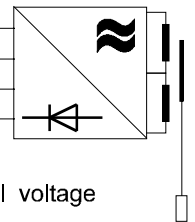
mating connector supplied



Example: DOE 300 R 0,25%

Connection	Wire	Connector
0 V	black	A
+15 V	red	B
-15 V	blue	C
U_a	white	D

Do not apply external voltage to D resp. white!



		DOE 25	DOE 50	DOE 100	DOE 150	DOE 200	DOE 250	DOE 300
Electrical stroke	mm	$\pm 12,5$	± 25	± 50	± 75	± 100	± 125	± 150
Max. mechanical stroke	mm	30	55	105	160	210	260	320
Dimension A	mm	40	55	80	105	130	155	180
Mounting length B	mm	80	120	160	240	320	400	500
Transducer weight	g	1000	1050	1100	1200	1350	1450	1600
Plunger weight	g	12	14	16	20	25	28	30
Supply	$\pm 15 V / 40 mA$, stabilized							
Output signal	0 ... 10 V							
Allowable load	5 kOhm							
Static resolution	virtually infinite							
Cut-off frequency	100 Hz							
Linearity *)	$\pm 0.5\%$ F.S.O. option: $\pm 0.25\%$							
Temperature coefficient of zero	$\pm 0.1\%$ / 10K							
Temperature coefficient of span	$\pm 0.2\%$ / 10K							
Pressure resistance	operation pressure 320 bar, test pressure 450 bar							
Operational temperature	0°C ... +60°C							
Protection class (DIN 40050)	IP 65							

*) select option when ordering

MESSOTRON
Hennig GmbH & Co. KG
Industrie-Messtechnik
Friedr.-Ebert-Str. 37, Tel.: (06257)82331
D-64342 Seeheim-Jugenheim

DOE Series
25 ... 1000 mm

Drawing
38.24.00
Page 1

Date 01/97

Design of transducers can be customised

Subject to change without notice
01/00

Inductive Displacement Transducer

Integrated electronics

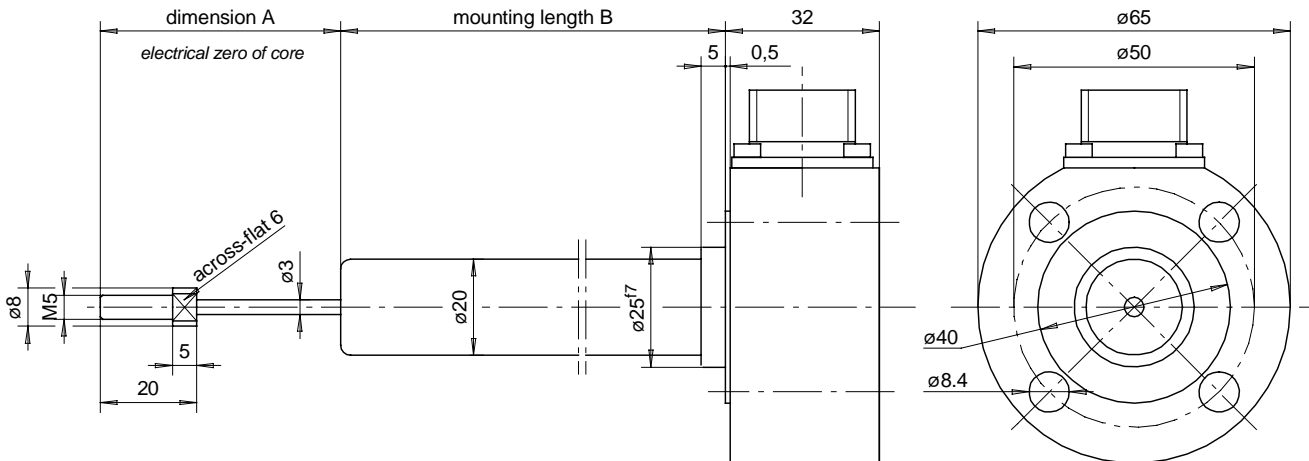
Supply $\pm 15V$

Output $\pm 10V$

Pressure resistant up to 320 bar

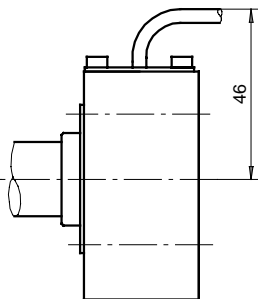
DOE

MESSOTRON



radial wire interface

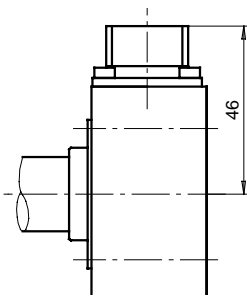
teflon wirel 2.5 m long



Example: DOE 800 Q 0,5%

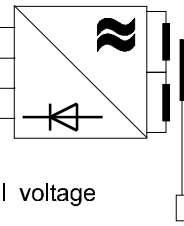
radial connector interface

mating connector supplied



Example: DOE 800 R 0,25%

Connection	Wire	Connector
0 V	black	A
+15 V	red	B
-15 V	blue	C
U_a	white	D



Do not apply eXternal voltage to D resp. white!

		DOE 400	DOE 500	DOE 600	DOE 800	DOE 1000
Electrical stroke	mm	± 200	± 250	± 300	± 400	± 500
Max. mechanical stroke	mm	420	520	630	830	1030
Dimension A	mm	230	280	340	440	540
Mounting length B	mm	620	750	880	1140	1420
Transducer weight	g	1800	2000	2200	2600	3000
Plunger weight	g	35	40	50	65	80
Supply	$\pm 15 V / 40 mA$, stabilized					
Output signal	0 ... 10 V					
Allowable load	5 kOhm					
Static resolution	virtually infinite					
Cut-off frequency	100 Hz					
Linearity *)	$\pm 0.5\%$ F.S.O. option: $\pm 0.25\%$					
Temperature coefficient of zero	$\pm 0.1\%$ / 10K					
Temperature coefficient of span	$\pm 0.2\%$ / 10K					
Pressure resistance	operation pressure 320 bar, test pressure 450 bar					
Operational temperature	0°C ... +60°C					
Protection class (DIN 40050)	IP 65					

*) select option when ordering

MESSOTRON Hennig GmbH & Co. KG Industrie-Messtechnik Friedr.-Ebert-Str. 37, Tel.: (06257)82331 D-64342 Seeheim-Jugenheim	DOE Series 25 ... 1000 mm	Drawing 38.24.00 Page 2
		Date 01/97

Design of transducers can be customised

Subject to change without notice
01/00