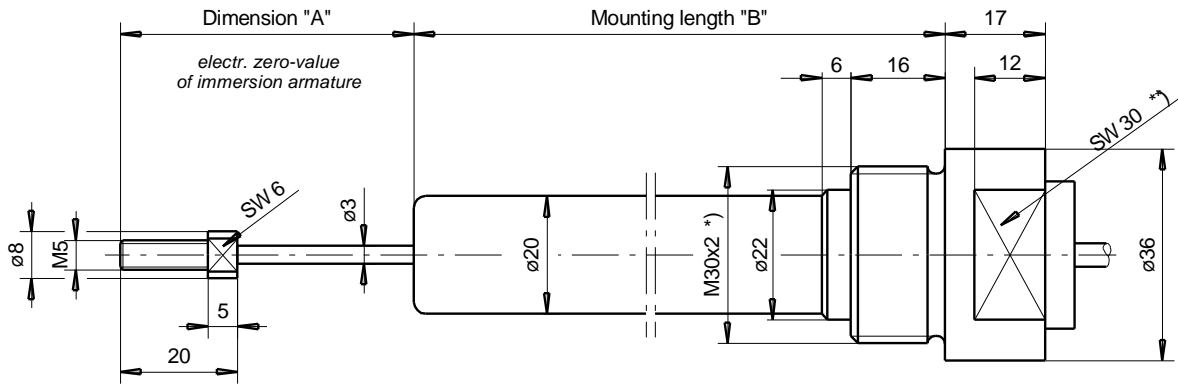


# Inductive Bulb Transducer

for cylinder mounting in hydraulics

**DGO** (pressure tight up to 450 bar)



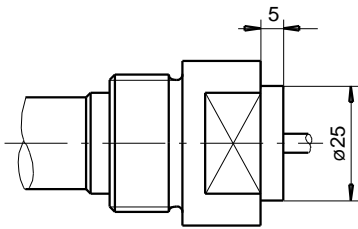
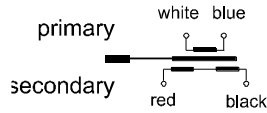
\*) Option: M30x1.5

\*\*\*) Option: Hexagon

## Wire interface

teflon cable 2.5 m long

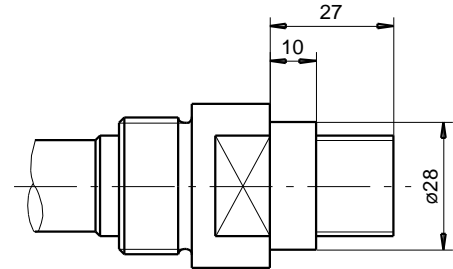
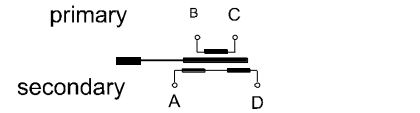
Connection:



## Connector interface

mating connector supplied

Connection:



		DGO 25	DGO 50	DGO 100	DGO 150	DGO 200	DGO 250	DGO 300
Nominal stroke	mm	±12,5	±25	±50	±75	±100	±125	±150
Maximum stroke	mm	30	55	105	160	210	260	320
Dimension A	mm	40	55	80	105	130	155	180
Mounting length B	mm	80	120	160	240	320	400	480
Transducer weight	g	550	600	650	750	900	1000	1150
Plunger weight	g	12	14	16	20	25	28	30
Excitation voltage		1... 5 Veff						
Excitation frequency *)		5 kHz, option: 10 kHz						
Static resolution		virtually infinite						
Recommended amplifier		MBI 46.31						
Linearity *)		±0,5% F.S.O., option: ±0,25%						
Temperature coefficient of zero		±0,04% / 10K						
Temperature coefficient of span		±0,1% / 10K						
Pressure resistance		operating pressure 450 bar; test pressure 500 bar						
Operational temperature *)		-40°C ... +80°C, Option: up to 120°C						
Protection class (DIN 40050)		IP 65						

\*) select option when ordering

# Inductive Bulb Transducer

for cylinder mounting in hydraulics

**DGO** (pressure tight up to 450 bar)

**MESSOTRON**  
SENSOR TECHNOLOGY

		DGO 400	DGO 500	DGO 600	DGO 800	DGO 1000
Nominal stroke	mm	±200	±250	±300	±400	±500
Maximum stroke	mm	420	520	630	830	1030
Dimension A	mm	230	280	340	440	540
Mounting length B	mm	620	750	880	1140	1420
Transducer weight	g	1350	1500	1700	2100	2600
Plunger weight	g	35	40	50	65	80
Excitation Voltage	1 ... 5 V <sub>eff</sub>					
Excitation frequency *)	5 kHz option: 10 kHz		5 kHz			
Static resolution	virtually infinite					
Recommended amplifier	MBI 46.31					
Linearity *)	±0.5% F.S.O.; option: ±0.25%					
Temperature coefficient of zero	±0.04% / 10K					
Temperature coefficient of span	±0.1% / 10K					
Pressure resistance	operating pressure 450 bar, test pressure 500 bar					
Operational temperature *)	-40°C ... +80°C; option: up to 120°C					
Protection class (DIN 40050)	IP 65					

\*) select option when ordering