

Eddy-current Sensor WP

Long-stroke sensor on eddy current basis



- Short body-to-stroke ratio
- For high dynamics and fast movements
- Pressure resistant to 320bar in hydraulics
- Easy installation and operation
- Custom models upon request

Technical data

		WP 60	WP 120	WP 160	WP 200	WP 300	WP 400	WP 500	WP 600	WP 800	WP 1000
Nominal stroke <i>s</i>	mm	60	120	160	200	300	400	500	600	800	1000
Maximum stroke	mm	70	130	180	230	330	430	530	650	880	1100
Mounting length <i>L</i>	mm	120	190	235	310	410	510	610	750	1000	1250
Zero position <i>k</i>	mm	35	35	35	45	45	60	60	60	80	80
Case diameter <i>d1</i>	mm	11	11	11	11	11	12	12	12	12	12
Sleeved core diameter <i>d3/d2</i>	mm	16/13	16/13	16/13	16/13	16/13	18/14	18/14	18/14	18/14	18/14
Sleeved core length <i>M</i>	mm	120	190	235	310	410	510	610	750	1000	1250
Transducer weight (approx.)	g	700	730	750	800	900	1000	1100	1200	1300	1500
Sleeved core weight (approx.)	g	30	40	50	60	80	150	190	230	280	350
Nominal output signal (approx.)	mV/V	27	40	55	32	30	30	30	30	30	36
Excitation voltage (eff.)	1... 5 V _{eff}										
Excitation frequency	5 kHz sinus										
Static resolution	virtually infinite										
Linearity	±0,5% F.S.O.										
Temperature coefficient of zero	±0,2% / 10K ; for Option 120°C: >100°C typ. ±1% / 10K										
Temperature coefficient of span	±0,2% / 10K ; for Option 120°C: >100°C typ. ±1% / 10K										
Pressure resistance	operating pressure 320 bar, test pressure 500 bar										
Operational temperature	-20°C ... +80°C Option: up to 120°C *)										
Protection class (DIN 40050)	IP 65										

*) select option for ordering

Model list

Order code:

WP	nnn	NN			/Option1
Series	Stroke	Connection			Options
WP	60 ... 1000	Radial cable	Radial connector	Axial connector	High operating temperature
		Q	R	AX	/120°C
X	60 ... 1000	X	X	X	O

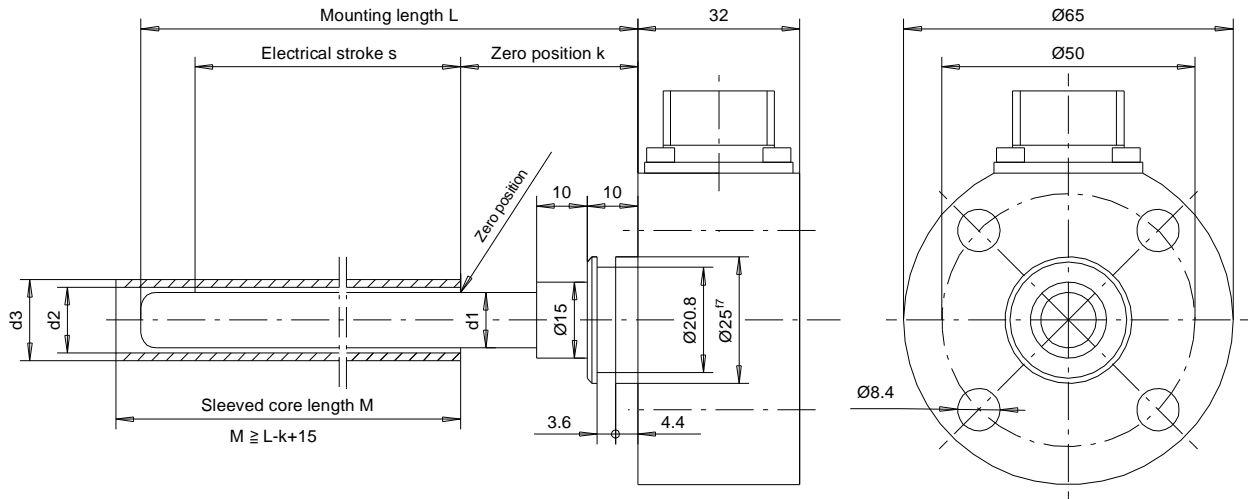
X = available standard model

O = option

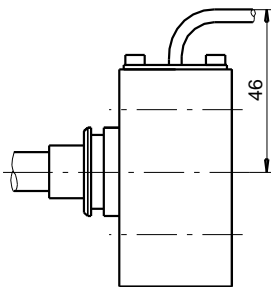
-- = not available

Eddy-current Sensor WP

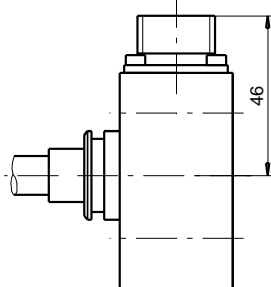
Mechanical drawings



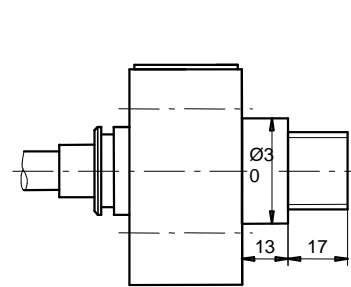
radial wire interface (Q)



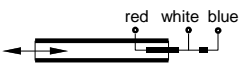
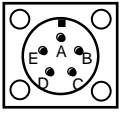

radial connector interface (R)



axial connector interface (AX)



Connection

	Q	R	AX
Type of connection	PTFE-cable 2,5 m long	Amphenol 3102 A connector (Mating plug supplied)	Amphenol 3101 A connector (Mating plug supplied)
Pin configuration			
Power supply +	Blue	C	C
Power supply -	Red	B	B
Measuring signal +	White	A	A
Measuring signal -	-	-	-
Mating plug	-	Amphenol 3106 A	Amphenol 3106 A